



# STAHL2000

## User Manual

STAHL 2000 || Klietsch GmbH

### STAHL 2000 Installation

Introduction Installation path Programs

Please select desired programs:

Program	zu installieren	<input type="checkbox"/> bereits installiert
Stahl2000 Launcher	1.0.2 <input checked="" type="checkbox"/>	1.0.2 <input checked="" type="checkbox"/>
1-Träger-Kranbrücke	02.40 <input checked="" type="checkbox"/>	02.40 <input type="checkbox"/>
2-Träger-Kranbrücke	02.53 <input type="checkbox"/>	02.53 <input type="checkbox"/>
Anschlüsse	01.22 <input checked="" type="checkbox"/>	02.04 <input type="checkbox"/>
Bemessung	04.33 <input type="checkbox"/>	04.33 <input type="checkbox"/>
Dachverband	04.05 <input checked="" type="checkbox"/>	04.05 <input type="checkbox"/>
Durchlaufträger	05.31 <input checked="" type="checkbox"/>	05.31 <input type="checkbox"/>
Ebenes Stabwerk	06.10 <input checked="" type="checkbox"/>	06.10 <input type="checkbox"/>
Giebelwand	03.06 <input checked="" type="checkbox"/>	03.06 <input type="checkbox"/>
Hallenrahmen	03.21 <input type="checkbox"/>	03.21 <input type="checkbox"/>

Cancel Support < Back Next >

## Table of Contents

Introduction .....	3
Installation .....	4
Start installation .....	4
Support .....	5
Installation path .....	6
Application selection .....	7
Installation overview .....	9
Installation summary .....	10
Order Management – first steps .....	11
First start .....	11
Request password file .....	11
Copy Password files .....	12
Import Password file .....	12
Enter passwords manually .....	13
Stahl 2000 Launcher .....	14
Using the Stahl 2000 Launcher .....	14
Options .....	15
Basic information on operating the Stahl 2000 applications .....	17
Calculation and Output .....	18
Start calculation .....	18
Calculation output .....	19
Load an existing calculation .....	24
Saving the current data .....	25
Deleting an existing position .....	26
Reset the current program data .....	26
Online-Update .....	27
Search updates for all applications .....	27
Search update for single application .....	27
Update-Prozess .....	28
No Update available .....	29
Update available .....	29
Downgrade to older versions .....	32
Support .....	33
Reachability .....	33
In case of support .....	33

## Introduction

Dear Ladies and Gentlemen,

Thank you for choosing the statics solutions from Ingenieurgesellschaft Klietsch GmbH. This program is based on our long-standing experience and our customer's feedback. With Stahl 2000 you get a product that is based on the highest possible quality.

Should you have problems with the installation or utilization of the software, please contact our support [support@klietsch.com](mailto:support@klietsch.com). If you prefer to contact us by phone, please dial +49 271 23167-55. The installation instructions are described as follows.

Siegen, April 2022

Ingenieurgesellschaft Klietsch GmbH

Königstraße 25

57078 Siegen

Tel.: 0271 / 23167-0

eMail: [support@klietsch.com](mailto:support@klietsch.com)

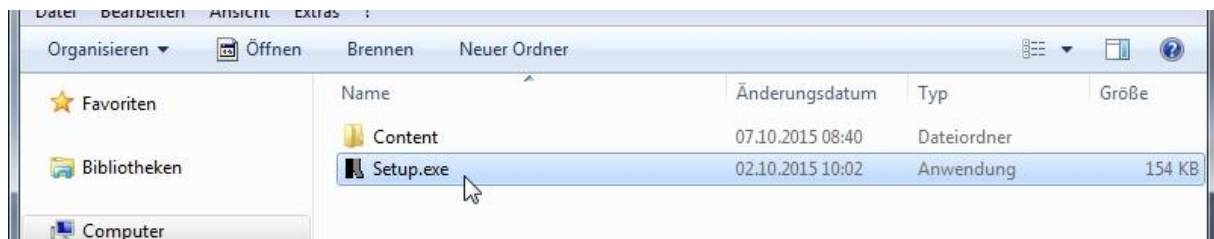
Web: <http://www.klietsch.com>

## Installation

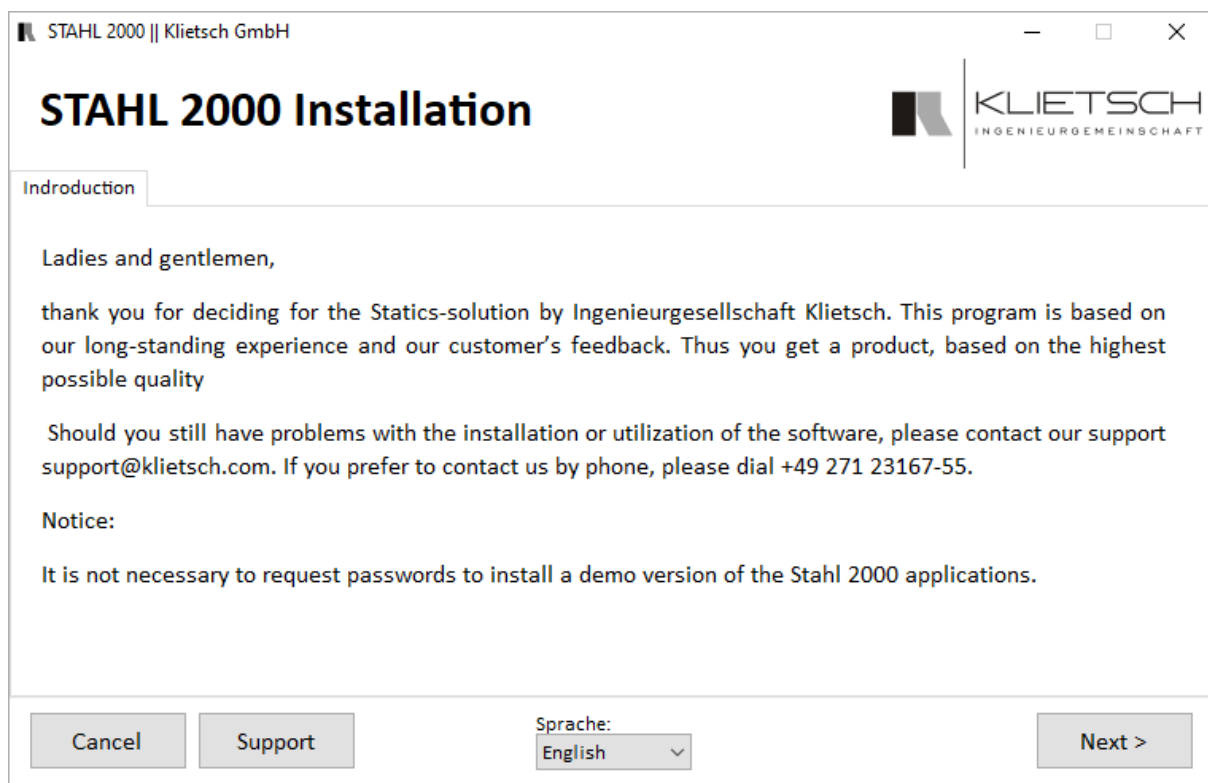
### Start installation

Insert the STAHL2000-CD in your CD-ROM drive. The installation starts automatically. If the auto start function for the drive is deactivated, open the windows-explorer, and start the installation by double-click on **“Setup.exe”** in the root-directory of the CD-ROM drive.

If you received a download version of Stahl 2000, unzip the folder and open „Setup.exe“.

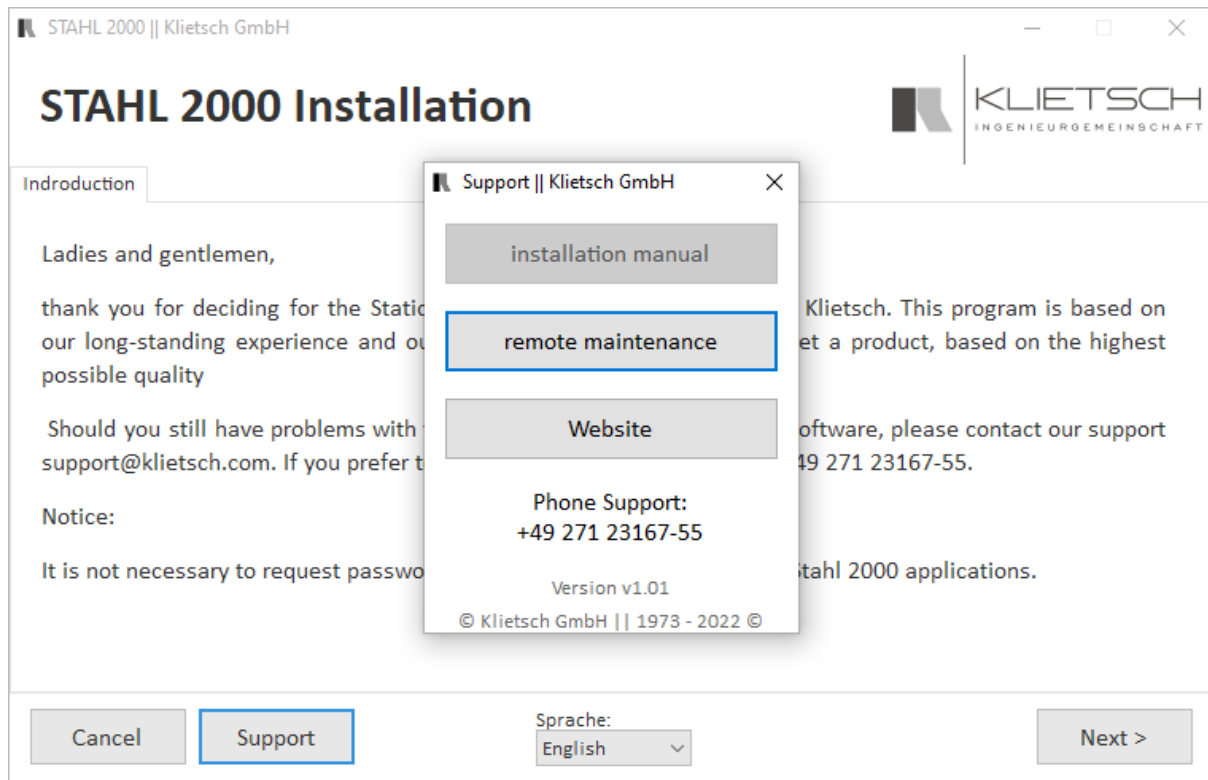


After the installation has started, the welcome window appears with information on support. Here you have the option of switching the installation language.



## Support

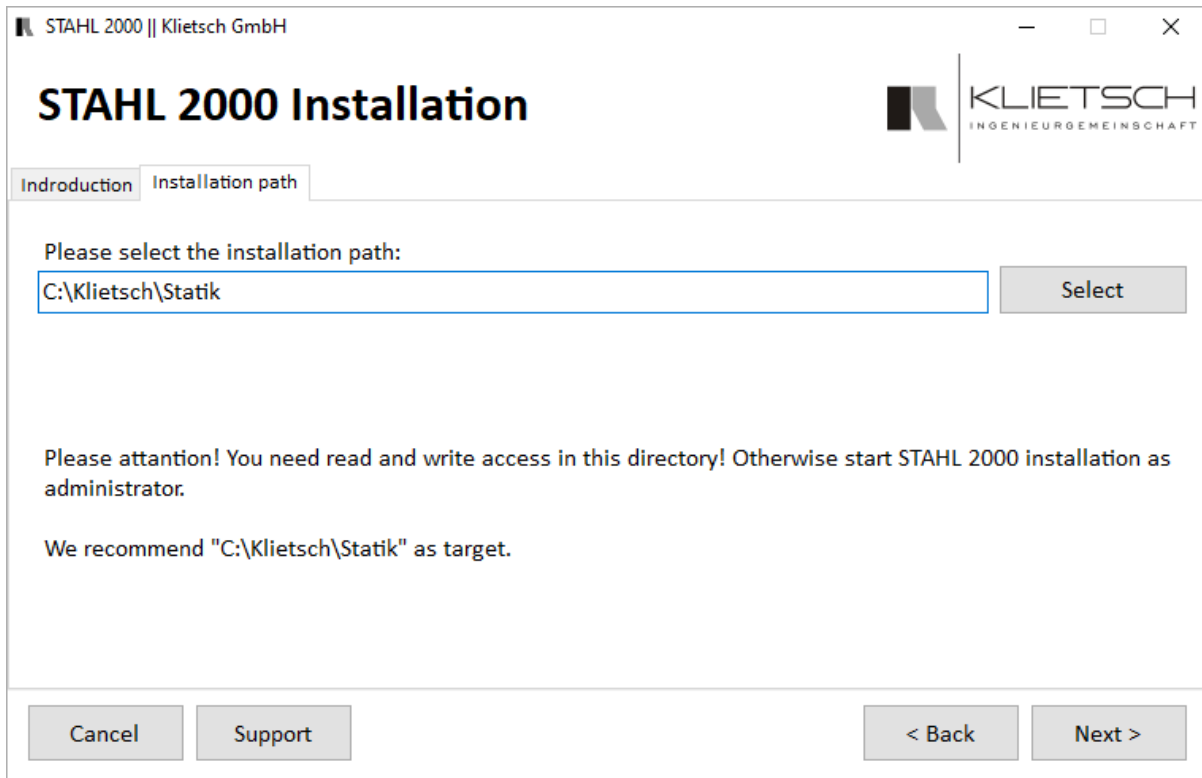
If you have problems with the installation, you are welcome to contact our support. We have built a few tools into the installation program to help you efficiently. A submenu appears when you click on the "Support" button.



From here you can open this installation documentation, start our remote maintenance solution directly or visit our website.

## Installation path

After clicking on „Next“, the path selection window is shown.



STAHL 2000 || Klietsch GmbH

### STAHL 2000 Installation

Introduction Installation path

Please select the installation path:

C:\Klietsch\Statik Select

Please attention! You need read and write access in this directory! Otherwise start STAHL 2000 installation as administrator.

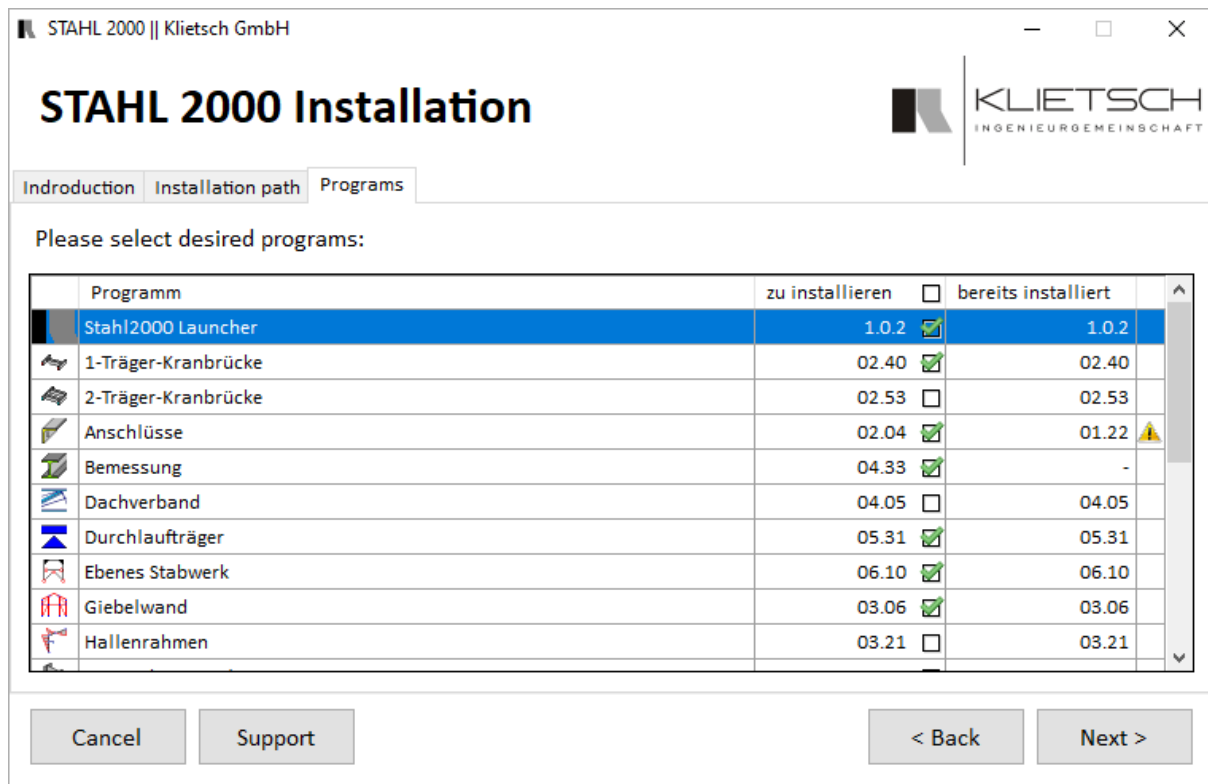
We recommend "C:\Klietsch\Statik" as target.

Cancel Support < Back Next >

The recommended installation path “C:\Klietsch\Statik” is suggested. If you already have an older installation under “C:\klietsch32”, this folder will be suggested instead. If an installation already has been carried out using this installation program, the installation path is determined and entered automatically.

Before the installation, note any write and read rights that were assigned by the system administrator. If a path is selected for which there are no write rights, the installation program will inform you and installation at this location will be refused.

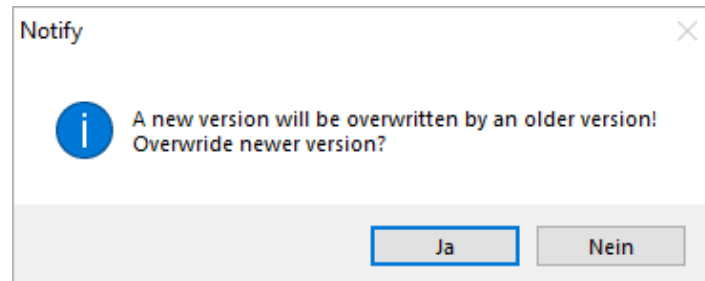
## Application selection



Click “[Next](#)” to confirm the selected installation path. The application list is displayed in the following tab. You will see the program name, the version on the CD or the download folder (“to be installed”) and any versions found in the installation path (“already installed”). If a program is not available on the hard disk, this is indicated by a “-” in the second version column (example: “[Bemessung](#)”).

The last column displays information about the versions, if applicable. If, for example, a new password is required after installation, a small yellow exclamation mark appears. The line for the “[Anschlüsse](#)” program will serve as an example. Version 1.22 is already installed, and version 2.04 should be installed. A new password must be requested for version 2.04.

If a version already exists on the hard disk, a message is also displayed. In addition, overwriting is indicated when you click on "Yes" and the following query appears:



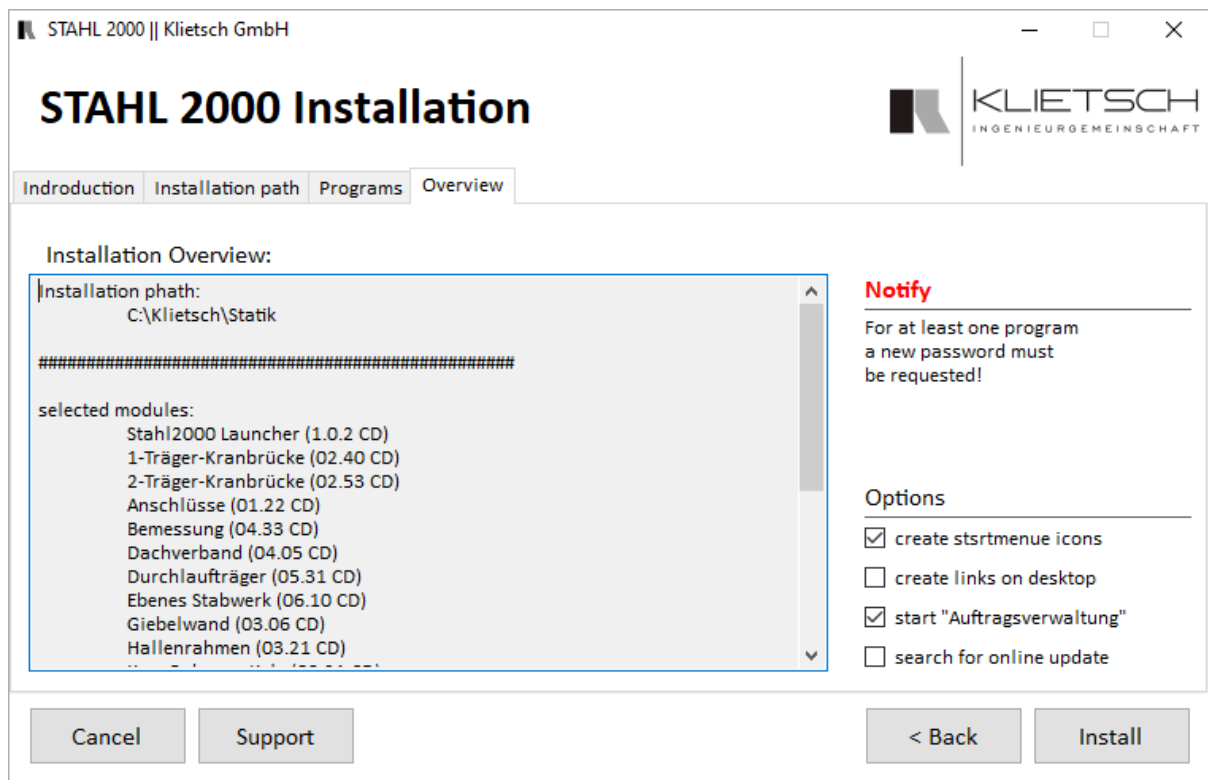
If you choose not to overwrite the application, click "No" and deselect the application manually.

Information is stored for each note in the last column, which is displayed when you hover with the mouse above the corresponding symbol.



## Installation overview

After all entries have been made, you will receive an installation overview with all important parameters, such as installation location and selected programs.



If a new password is required after an update, this will be displayed in the information field.

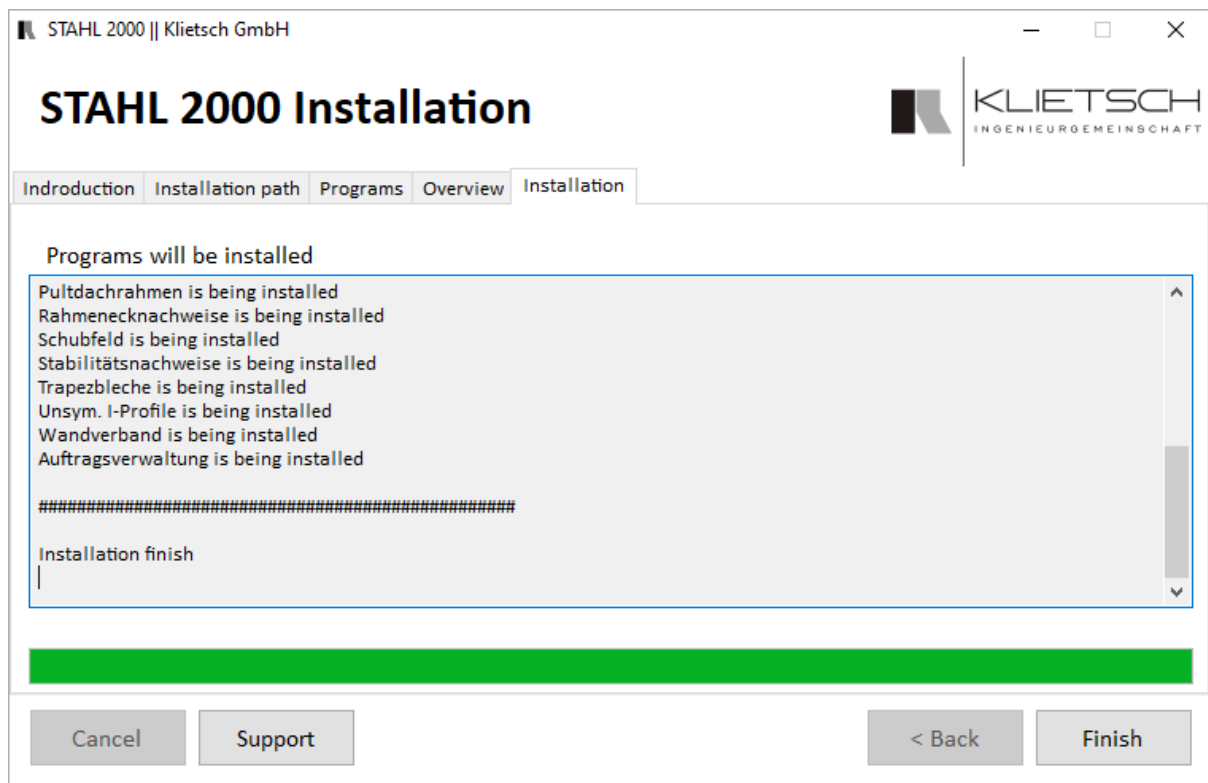
Furthermore, you have the following options:

- Create start menu entries
- Create desktop shortcuts
- Start order management after installation

Once the options have been selected, you can start the installation by clicking on "[Install](#)".

## Installation summary

During the installation you will see the installation progress. If errors occur during the installation, these are also displayed in the status window.

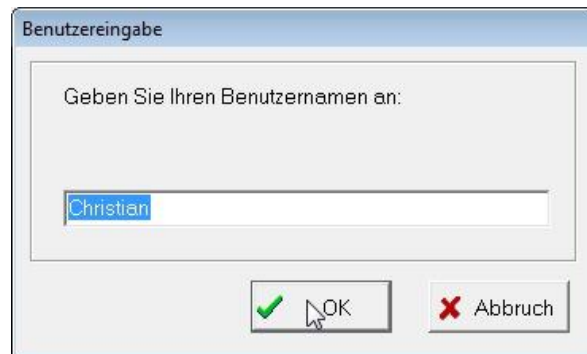


Once the installation is complete, you can exit the installation program by clicking "[Finish](#)". If you previously selected the "[start Auftragsverwaltung](#)" option, the order management will now open. Read about this in the chapter "Order Management - First Steps".

## Order Management – first steps

### First start

The first time you start "[Auftragsverwaltung](#)" you will be prompted to enter a username. Enter your username and confirm with "OK".



If you have installed the STAHL2000 products for the first time, the order management prepares the first start. You will receive a notification that the orders have been reset to the default order.



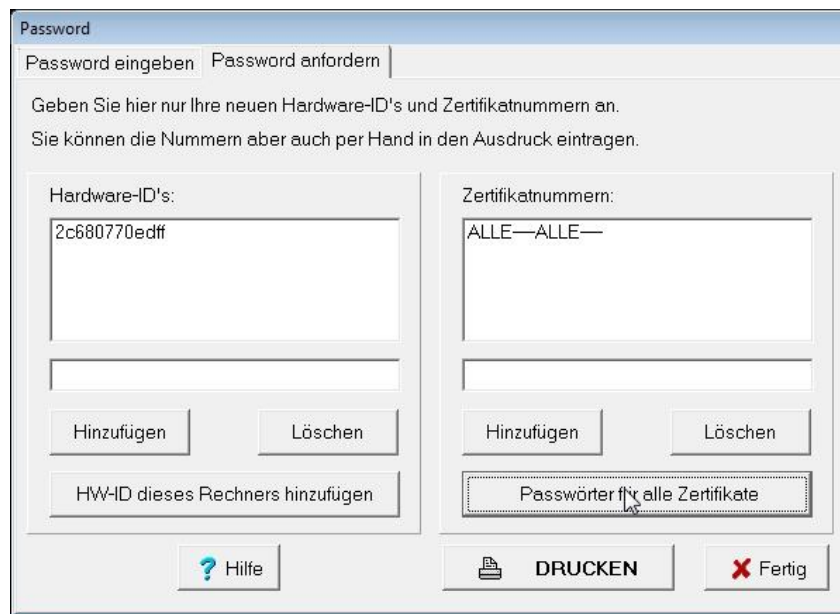
If a password file does not yet exist, you will receive a message telling you how to request a valid password file.

### Request password file

In the window that appears, select the "[Password anfordern](#)" tab. In the left column, enter the hardware IDs of the computers on which the programs are planned to run. To do this, enter the corresponding hardware ID in the text field and add it to the list with the "[Hinzufügen](#)" button. If you would like to add the hardware ID of the computer you are currently working on, use the "[HW-ID dieses Rechners hinzufügen](#)" button. Entered hardware IDs can be removed from the list using the "[Löschen](#)" button.

Please enter the certificate numbers in the right column. If you would like to request passwords for all certificate numbers, please click on the "[Passwörter für alle Zertifikate](#)" button. After you have checked all the information, print the request using the "[Drucken](#)" button. Then write your sender on the printout and send it to our support by post, fax or email.

Please don't forget to write down your email address, as this is where we will send you the password file!



You will then receive the valid password file as soon as possible. Close the window with the "Fertig" button.

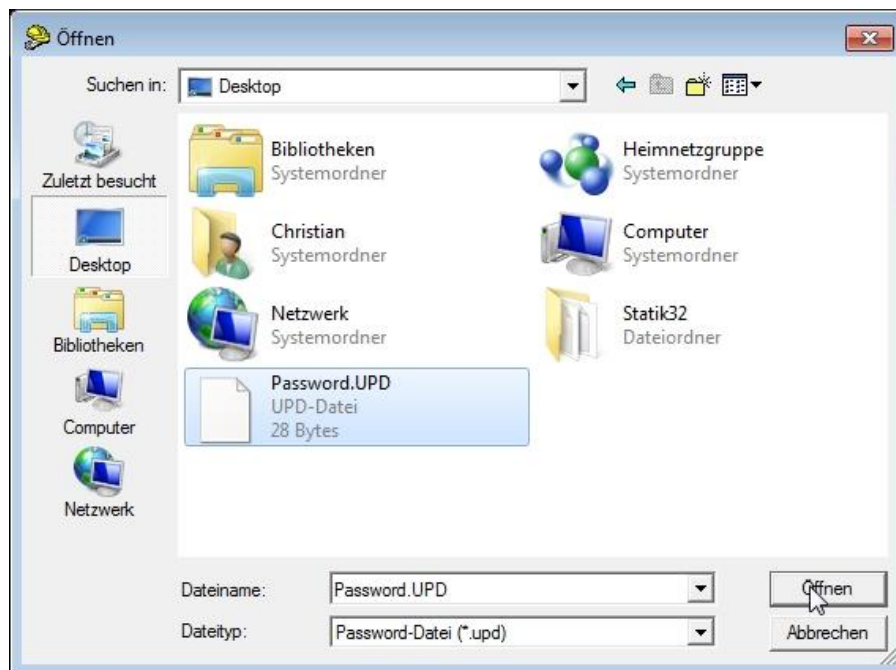
## Copy Password files

If you have received the password file by e-mail, copy the attached file "**PASSWORD.UPD**" into the installation directory of your STAHL2000 programs. If you have not changed the installation path, to "**C:\Klietsch\Statik**". After starting the first application, the passwords are then transferred to the permanent password file. If you have requested passwords for several computers on which the Stahl 2000 applications are installed locally, copy the file accordingly to all computers.

## Import Password file

Another way to include the password file is to import it. To do this, start the order management and select the entry "**Password-Datei importieren**" in the "**Password**" menu. In the Explorer window that opens, navigate to the directory with the password file, select it and open it with the "Open" button.





## Enter passwords manually

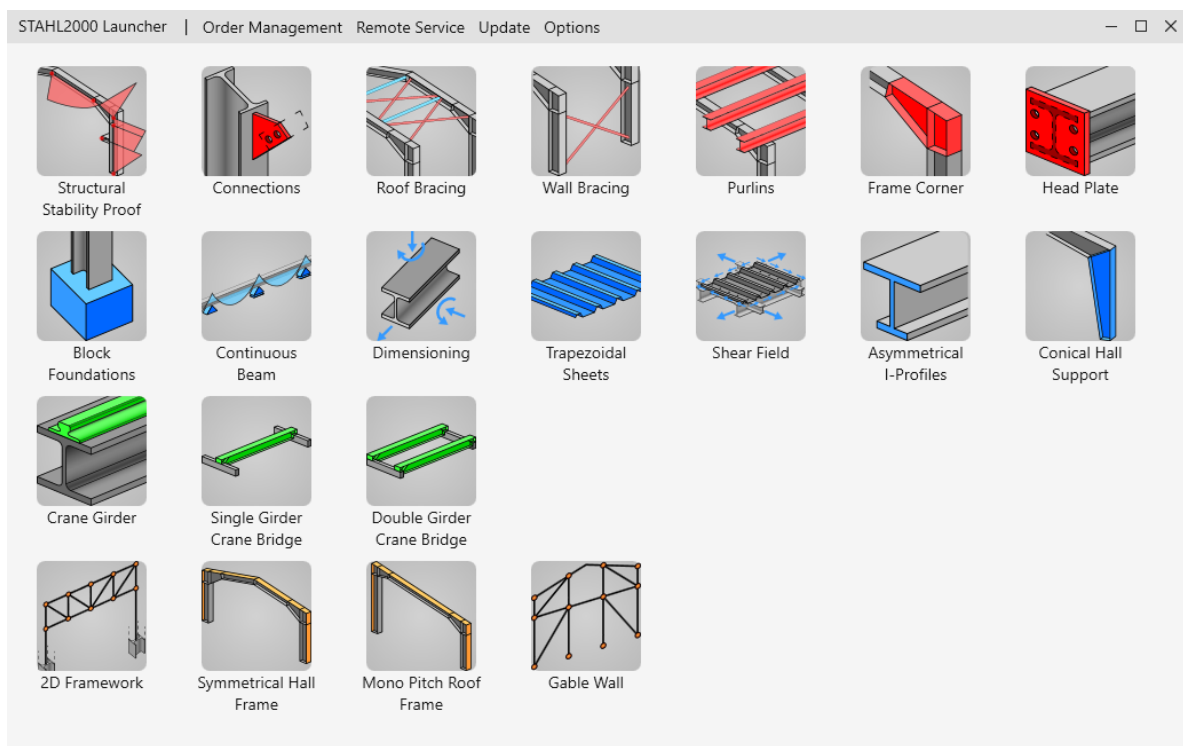
If you want to enter the passwords manually, select **"Password anfordern/eingeben"** in the **"Password"** menu and then the **"Password eingeben"** tab. Please enter the certificate number associated with the password in the field **"Zertifikat"**. Enter the password in the **"Password"** field and then select the appropriate program. Confirm your entry with **"Speichern"** and repeat the process for additional passwords if necessary. Complete the entry with the **"Fertig"** button.



## Stahl 2000 Launcher

The Stahl 2000 Launcher is included in every program package. It is comparable to a desktop that contains all the shortcuts to the installed Stahl 2000 applications.

In addition, some settings can be made here, such as language selection, opening order management, starting remote maintenance for support and more.



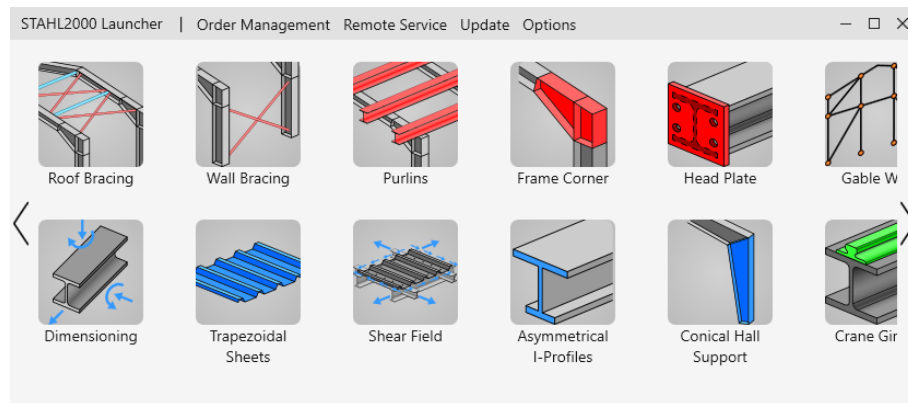
When started, the Stahl 2000 Launcher recognizes the installed Stahl 2000 program modules and generates appropriate links the applications can be started with.

## Using the Stahl 2000 Launcher

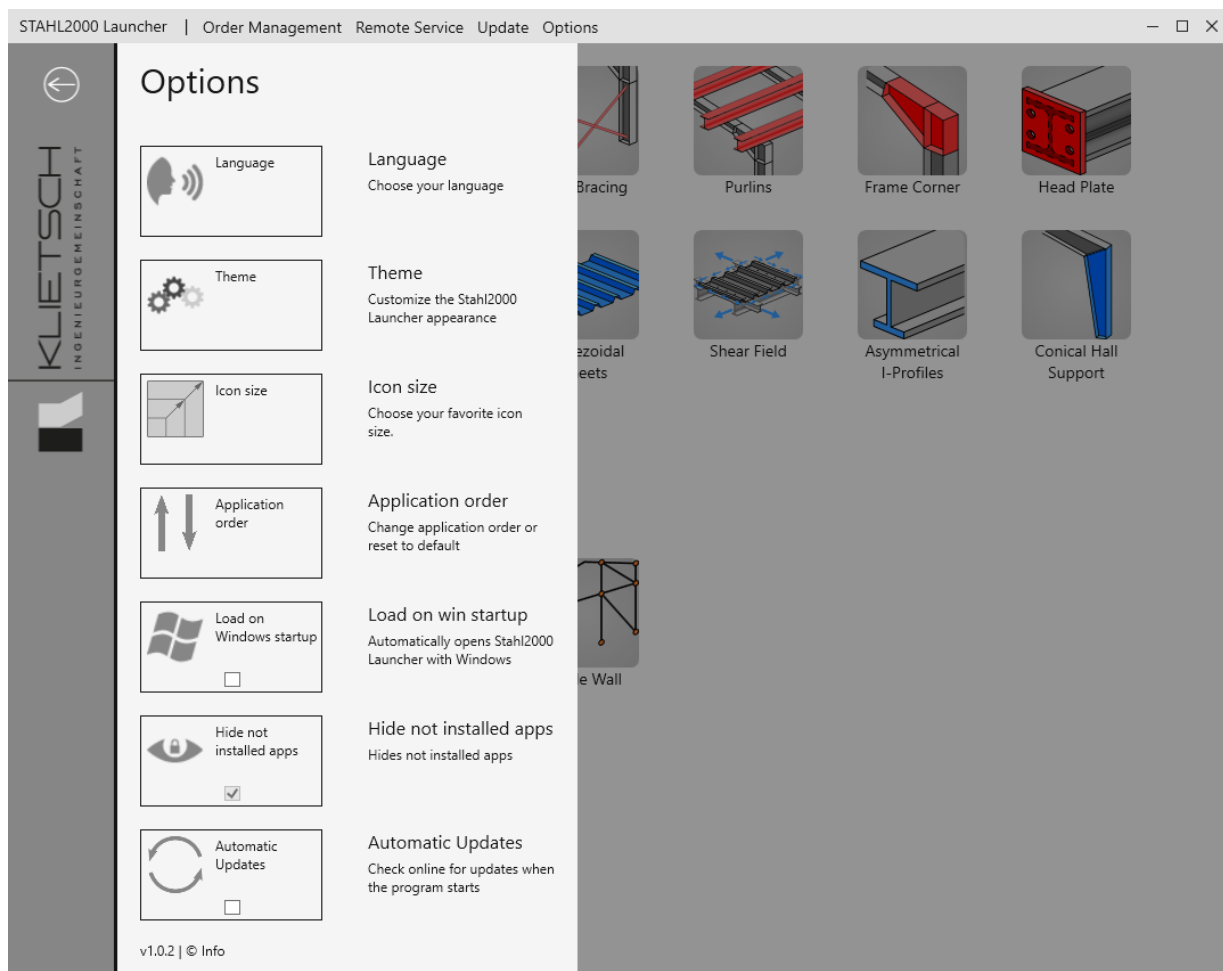
Order management, remote maintenance and the update program can be started via the menu buttons in the title bar. A single click on a corresponding Stahl 2000 application will open the program.

The launcher offers the possibility to arrange the application icons as you wish. This is achieved by holding down the left mouse button and moving the icon at the same time. It is possible, for example, to group certain applications or sort them by frequency of use.

If applications are covered by changing the window size, arrow symbols appear at the corresponding edge of the window. Hidden applications can be displayed again by clicking on the arrow symbols or turning the mouse wheel.



## Options



The following settings can be changed in the options menu:

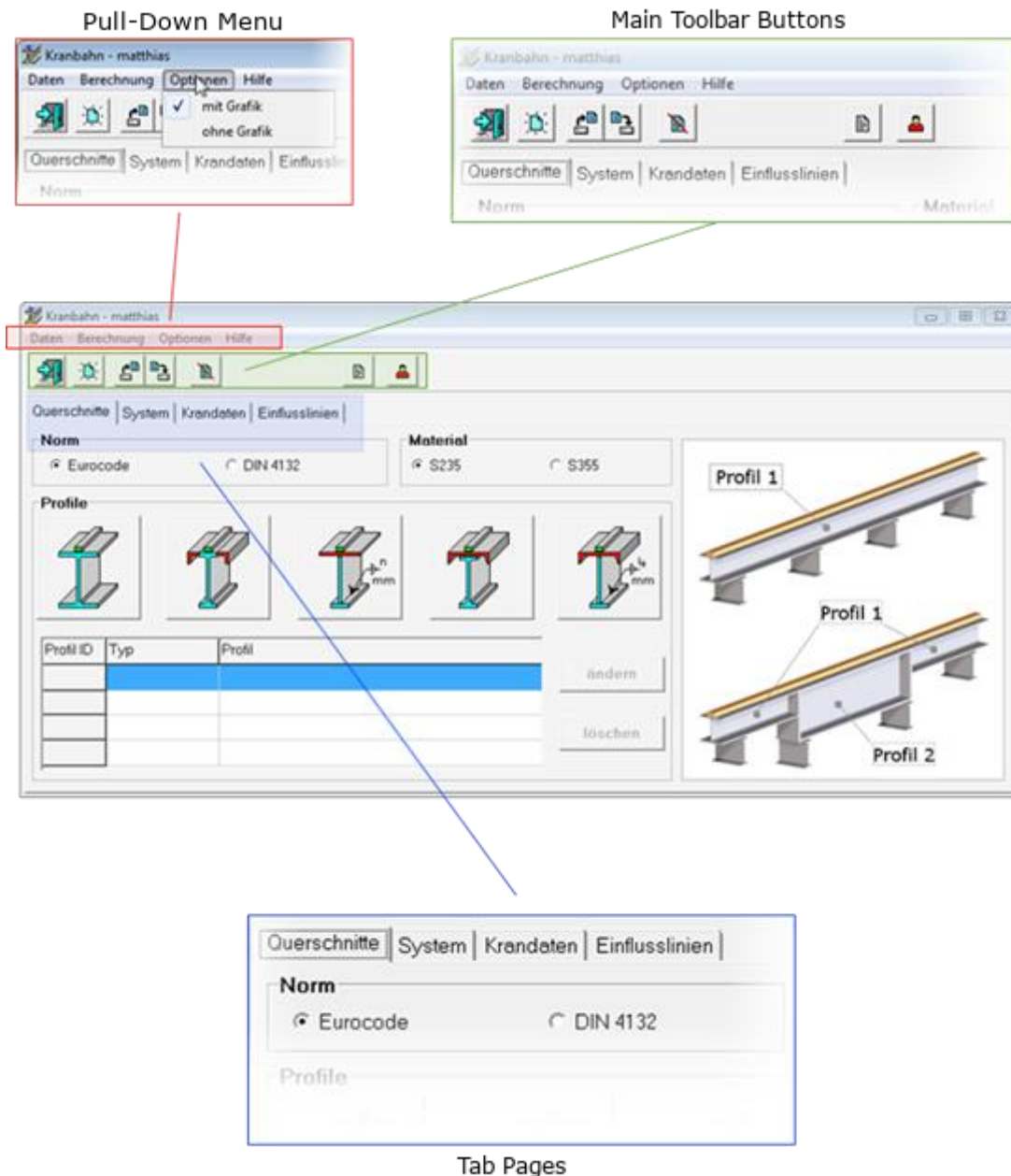
Language:	Change the language of Stahl 2000 Launcher
Theme:	Change the appearance of the Stahl 2000 Launcher
Icon Size:	Change the icon size
Application order:	Offers various sorting options for the programs. Here you can also restore the default arrangement and grouping of the programs
Load on Windows startup:	Starts the launcher automatically on windows start, when active
Hide not installed apps:	If not all applications of the Stahl 2000 program group are installed, the remaining applications can be displayed or hidden in the main window.
Automatic updates:	When enabled, the launcher will automatically check for updates. If an update is available, the user will be informed. He can then decide whether the update should be installed. If the option is disabled, no further version checking is performed until the option is enabled again.



## Basic information on operating the Stahl 2000 applications

After starting, a window with 3 action areas appears:

- Pull-Down Menu
- Toolbar Buttons
- Tab pages



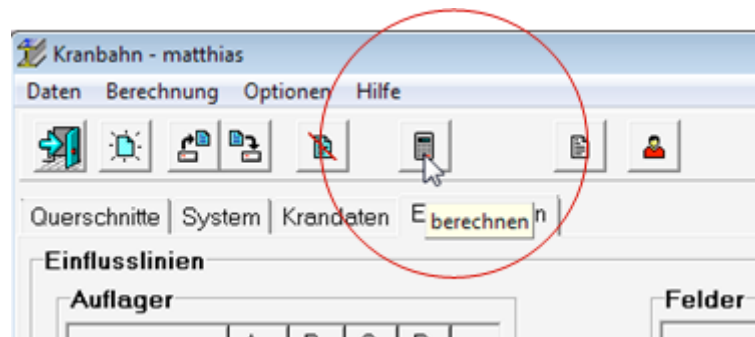
The pull-down menu and the buttons contain general functions such as loading a saved system, saving the current entries, starting the calculation or printing.

The actual program operation takes place via the tab page system. Each tab corresponds to an input page. The tabs are sorted by topic and should be worked through from left to right. In some cases, it is also not possible to switch to the next tab page as long as the current tab page has not been completely filled out.

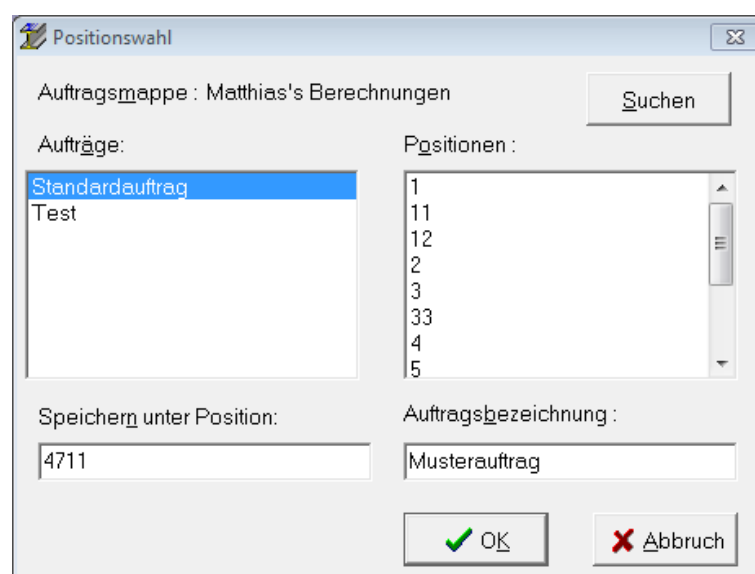
## Calculation and Output

### Start calculation

After entering all values, the calculation can be started by clicking on the calculator symbol.



If the current entry is a new entry, you will first be prompted to save the current data.



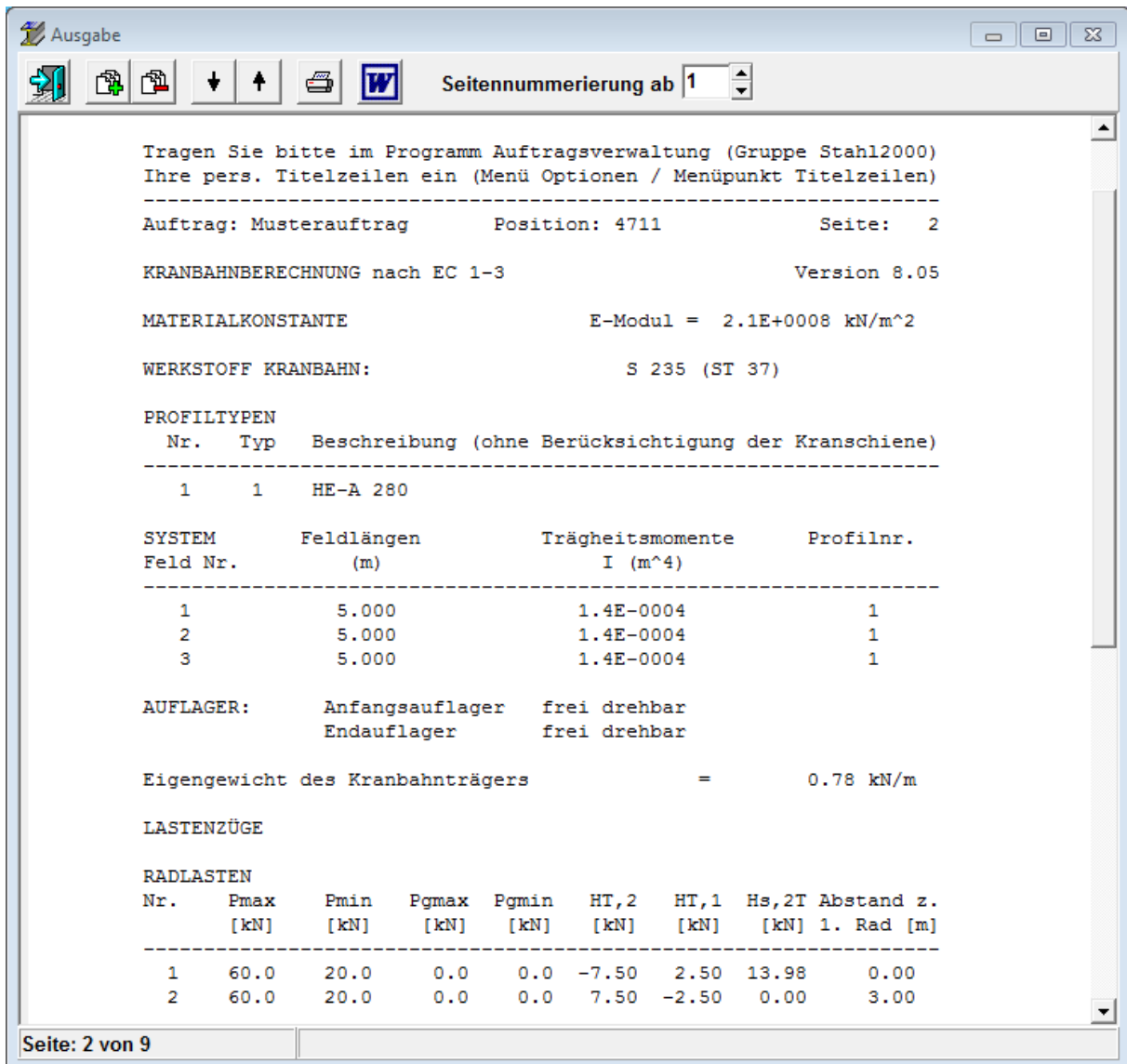
To do this, select the desired "**Auftrag**" (if there are several) and enter a "**Position**" or a position identifier (here 4711) for the current calculation as well as an explanatory text under "**Auftragsbezeichnung**" (here: Musterauftrag).

Confirm the entries with "**OK**".

## Calculation output

After a short calculation time, a new window appears with the results of the current calculation.

Depending on the current calculation, a warning may appear beforehand that the beam is undersized, and a correct calculation is not possible.



The screenshot shows a software window titled "Ausgabe" with a toolbar and a text area displaying calculation results. The text area contains the following information:

Tragen Sie bitte im Programm Auftragsverwaltung (Gruppe Stahl2000)  
 Ihre pers. Titelzeilen ein (Menü Optionen / Menüpunkt Titelzeilen)

---

Auftrag: Musterauftrag      Position: 4711      Seite: 2

KRANBAHNBERECHNUNG nach EC 1-3      Version 8.05

MATERIALKONSTANTE      E-Modul = 2.1E+0008 kN/m<sup>2</sup>

WERKSTOFF KRANBAHN:      S 235 (ST 37)

PROFILTYPEN

Nr.	Typ	Beschreibung (ohne Berücksichtigung der Kranschiene)
1	1	HE-A 280

---

SYSTEM Feld Nr.	Feldlängen (m)	Trägheitsmomente I (m <sup>4</sup> )	Profilnr.
1	5.000	1.4E-0004	1
2	5.000	1.4E-0004	1
3	5.000	1.4E-0004	1

---

AUFLAGER:      Anfangsauflager      frei drehbar  
                  Endauflager      frei drehbar

Eigengewicht des Kranbahnträgers      =      0.78 kN/m

LASTENZÜGE

RADLASTEN

Nr.	Pmax [kN]	Pmin [kN]	Pgmax [kN]	Pgmin [kN]	HT,2 [kN]	HT,1 [kN]	Hs,2T Abstand z. [kN] 1. Rad [m]
1	60.0	20.0	0.0	0.0	-7.50	2.50	13.98      0.00
2	60.0	20.0	0.0	0.0	7.50	-2.50	0.00      3.00

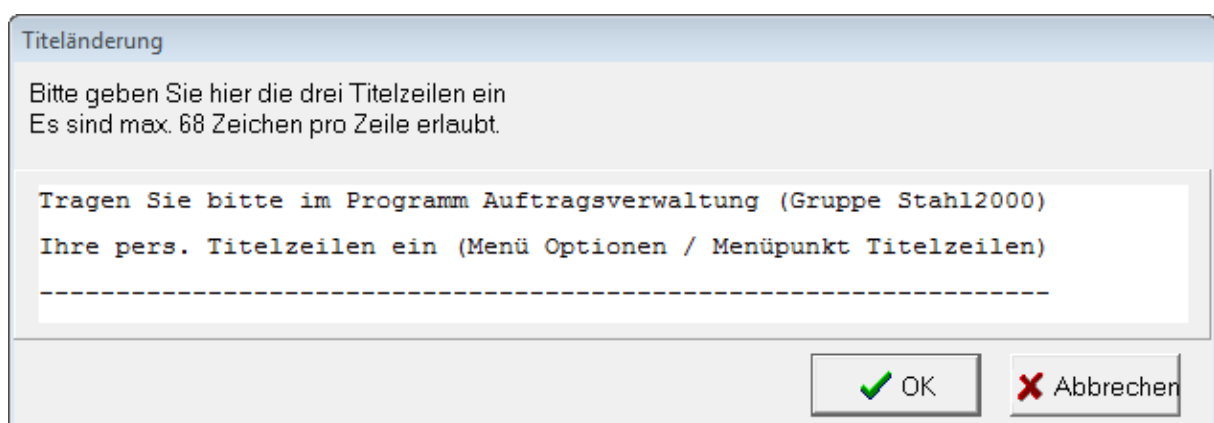
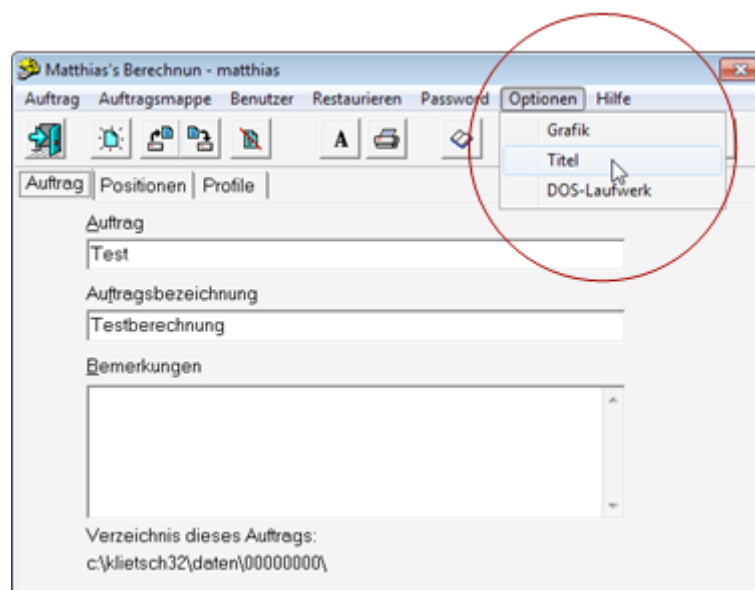
Seite: 2 von 9

The calculation is displayed in the output window as it is output on the printer.

### Customize captions

When first started, the title lines are not yet individually adjusted, instead 3 lines with information on setting up the title are displayed as placeholders.

The title lines can be changed with the "Auftragsverwaltung" program module. The order management can be opened with the Stahl 2000 Launcher.



Edit the 3 lines as you wish and confirm the change with "OK".

## Scroll through the output

You can use different keys to read the output text or to go to specific positions.

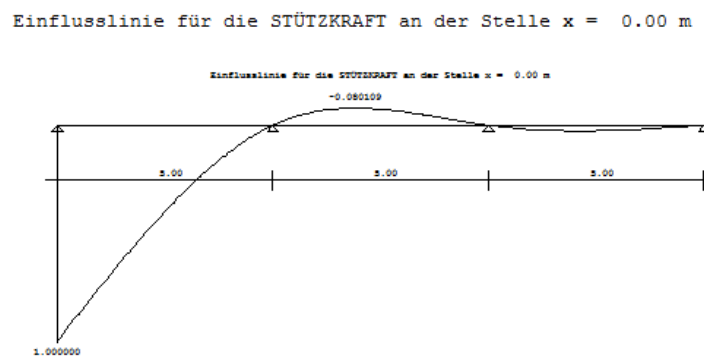
- Arrow down/up (down/up line by line)
- Page Down/Up (page down/up)

Alternatively, the corresponding buttons at the top of the window can also be used.

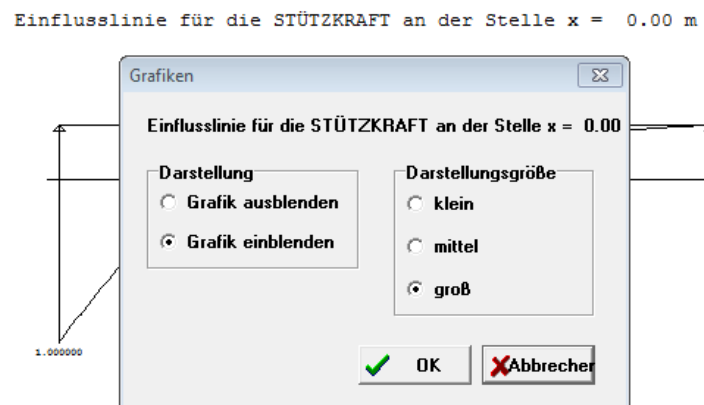


## Output graphics

Depending on the program settings, graphics are included at various points in the output text.

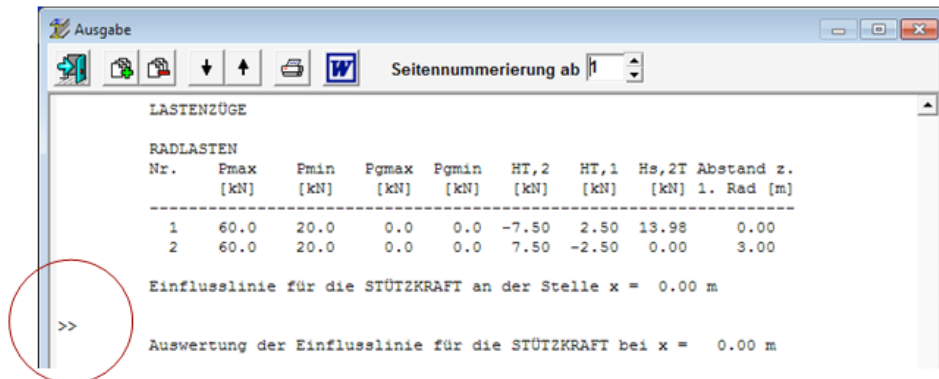


This graphic output can be adjusted within certain limits. To do this, simply click with the mouse (left mouse button pressed) on the corresponding graphic. A window with setting options for the currently selected graphic is displayed on the screen.



### Enable / Disable graphics

The currently selected graphic can be activated or deactivated with the "[Grafik ausblenden](#)" or "[Grafik einblenden](#)" buttons. If the graphics are deactivated, a symbol is shown in the display instead of the graphics, which can be selected like the original graphics and enables the graphics settings to be opened.



### Graphic Size

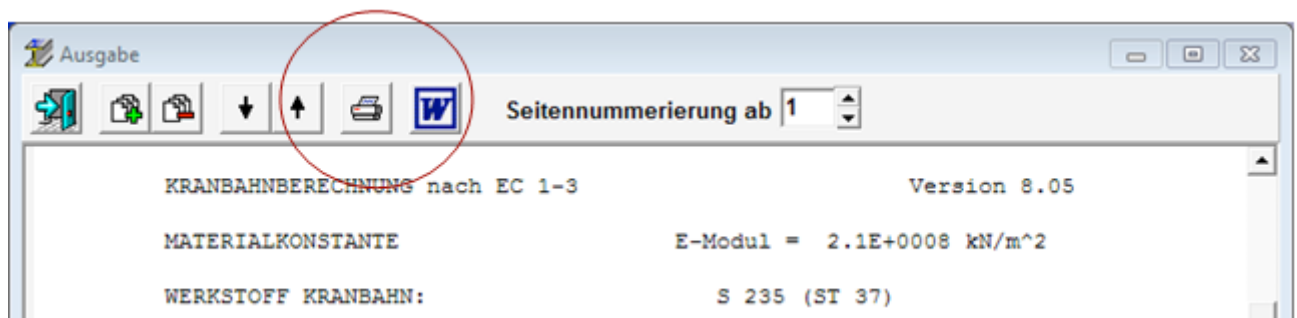
The size of the graphic can be influenced with the switches in the "[Darstellungsgröße](#)" area.

- Small ([klein](#))
- Medium ([mittel](#))
- Large ([groß](#))

### Output to printer

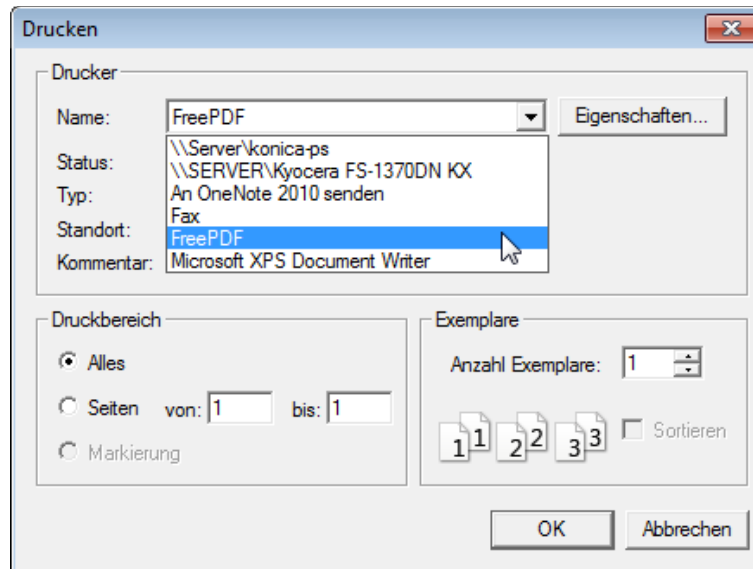
The print output is started by clicking on the printer symbol. The printer and the print options are selected using the standard printer control of your Windows system. Before you start printing, please make sure to correctly set the page number for the first page using the page numbering setting.

**Notice!** The printer output is not available in demo mode.



## pdf-output

If you have installed a pdf printer in your system, you can use it to output the printout as a pdf file.

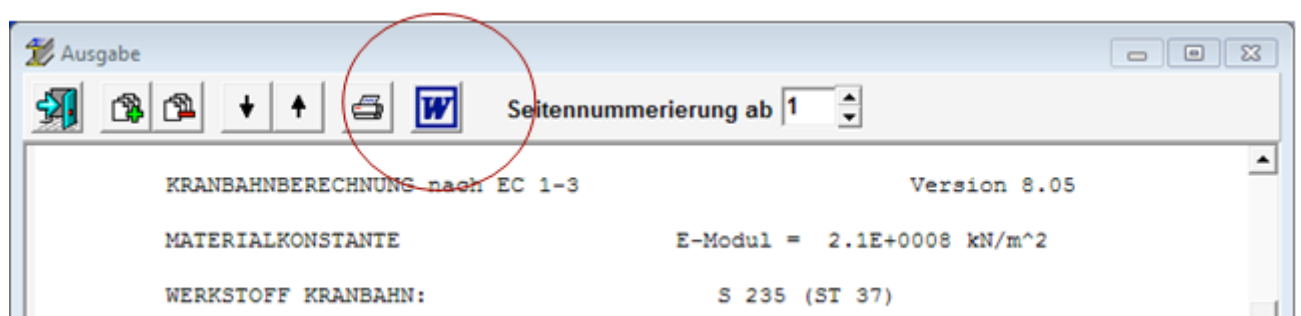


## Output to a Word document

As an alternative to the direct printout, the output can also be made into a Word document. This makes sense if, for example, the entire static calculation is created in Word and the crane runway calculation is to be inserted into this document.

The prerequisite is the correct installation of Microsoft Word. The output is started by clicking the Word icon at the top of the output window. After a short time, Word starts and automatically opens a document with the crane runway girder calculation.

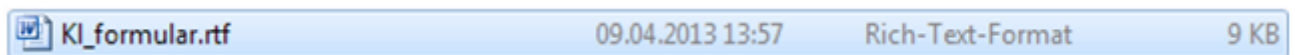
**Notice!** Output to a Word document is not available in demo mode.



## Customize Word output

A template is used for the Word output, which can be adapted to personal requirements, such as headers, footers, etc., if necessary.

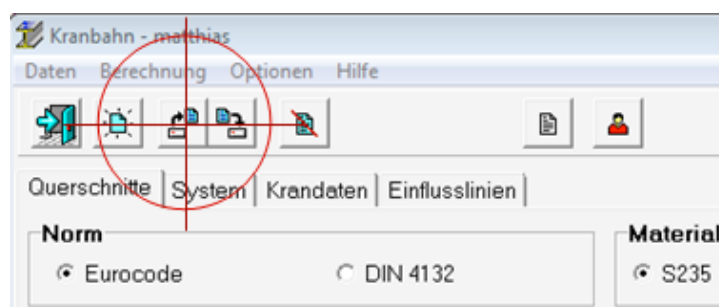
This is the document "KI\_formular.rtf" in the installation directory for the STAHL2000 programs.



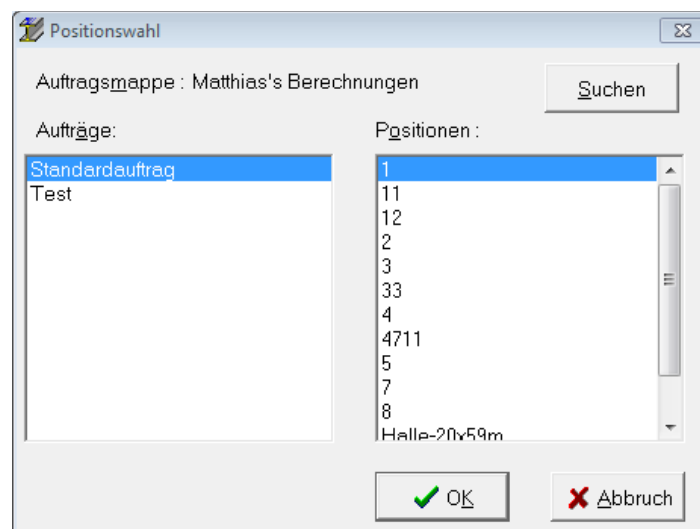
## Load an existing calculation

The data from a previous calculation can be reloaded at any time, e.g., for a new calculation with the same or changed values.

To load a calculation, either select the menu item „Daten“ → „Laden“, or the load symbol in the area of the buttons at the top of the window. Another menu window appears for the selection.



Select the desired "Position" there. You may have to select the appropriate "Auftrag" on the left and/or select the appropriate "Auftragsmappe" using "Suchen".

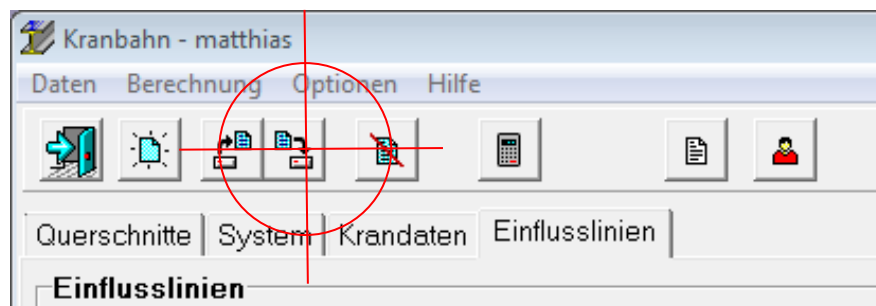




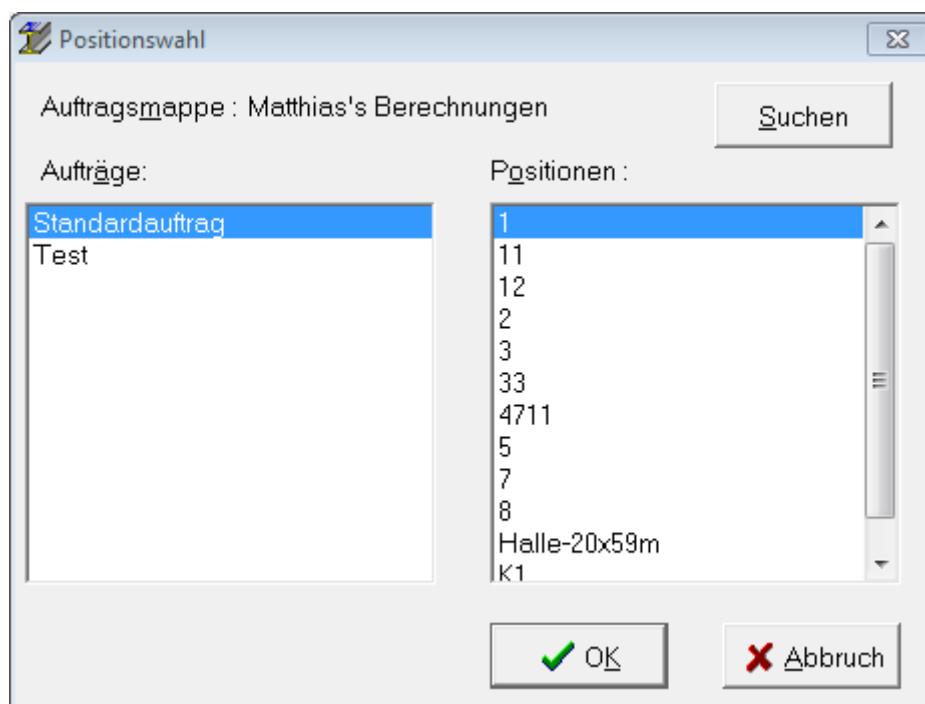
## Saving the current data

Before starting the calculation, you will automatically be prompted to save the current data (see Calculation & Output). However, there is also the option of saving the current data at any time.

If the position number is known, e.g. if data has been loaded, the current data can be saved under the same position number with „Daten“ → „Speichern“ without further entries.



With the „Daten“ → „Speichern unter“, command or the save symbol in the area of the buttons at the top of the window, the save dialog is called up and you have the option of saving the current data under a new position number.

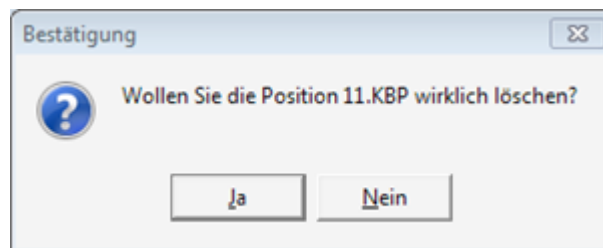


## Deleting an existing position

Over time it can happen that the list of saved calculations (positions) becomes longer and more confusing. Calculations that are no longer required can easily be deleted.

After selecting the delete symbol in the main toolbar at the upper edge of the window, the selection menu for saved calculations (positions) known from loading appears.

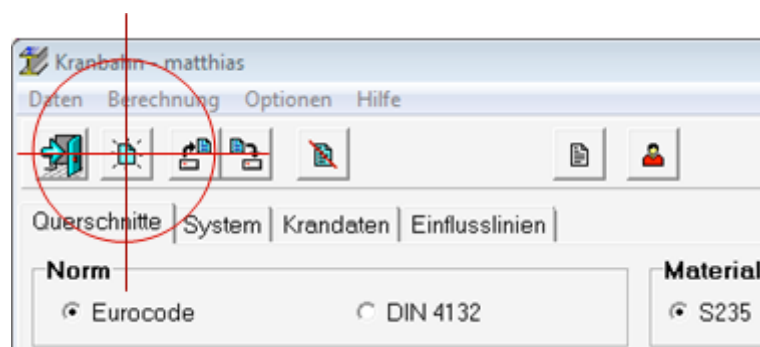
After selecting a position and confirming with "OK", there is an additional query as to whether the selected position should really be deleted.



After confirming this additional query with "Ja", the data concerned will be irrevocably deleted.

## Reset the current program data

The calculation program can be reset to its original state by exiting and restarting, i.e., all current data is removed or set to 0. As an alternative to restarting, the "New" button in the main toolbar at the top of the window can also be used.



In the output window it is possible to change the size of graphics individually or to show and hide them. With the help of the „Optionen“ → „ohne Grafik / mit Grafik“ menu, the graphics output can be completely deactivated and reactivated if required.

## Online-Update

Updates can be imported using data carriers (CD-ROM) and the installation program contained there. Updates are more convenient and faster using the online update function built into the program.

For the online update function you need an internet connection and an active maintenance contract.

You can update the programs in two ways as described below.

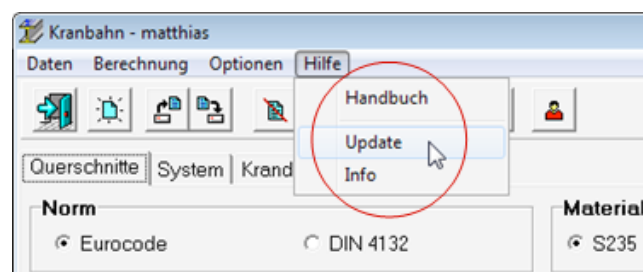
### Search updates for all applications

You can search for updates for all installed programs. To do this, start the update program. You will find the update either in the shortcuts (in the start menu, or if selected on the desktop; "Update") or in the installation directory ("StatikUpdate.exe").

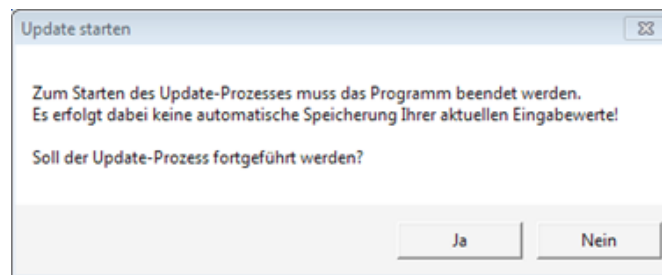
After the process has started, you can proceed as described in the "Update process" subsection.

### Search update for single application

To start, select the menu item in the respective program „Hilfe“ → „Update“.



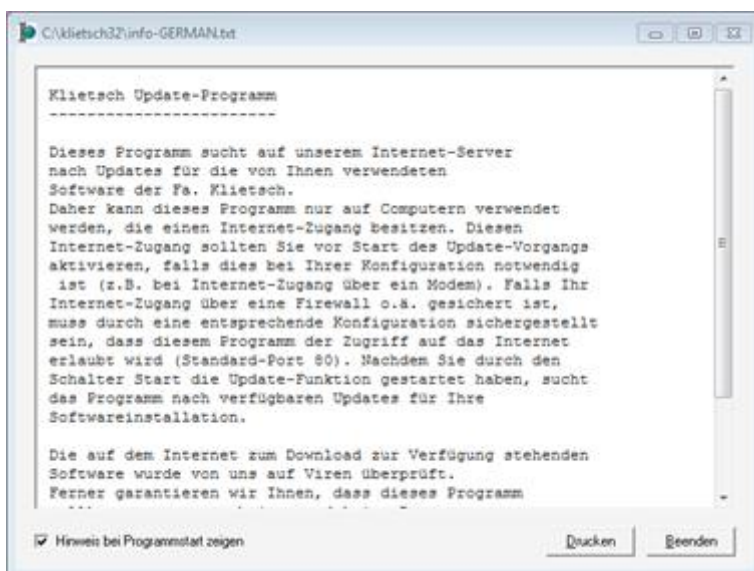
After selecting "Update", a message appears that the current program will be closed with the current settings, as well as the question as to whether the update process should be continued.



If the update process is continued with "Ja", a window appears with further information on the update process.

## Update-Prozess

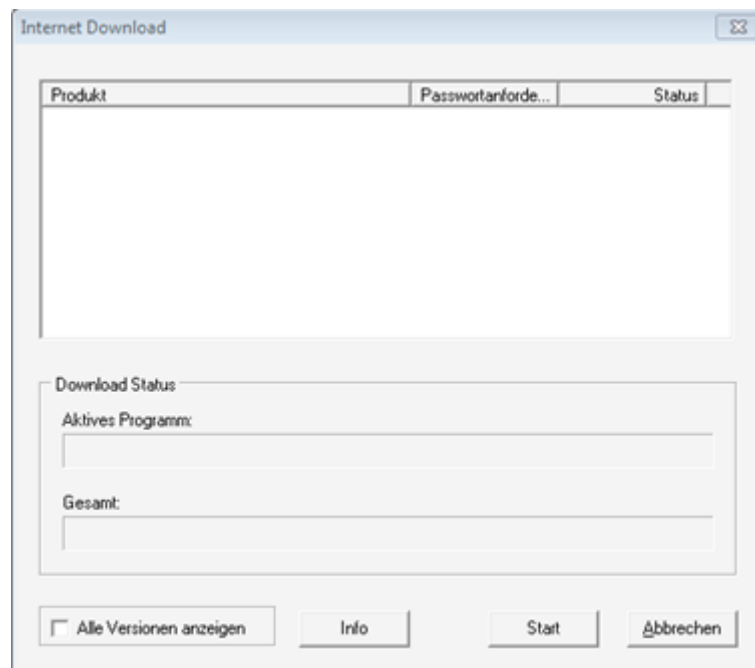
At the beginning of the update, a message appears:



The display of these notices can be deactivated for future updates. Furthermore, the notes can be transferred to the print output with "Drucken".

Using "Beenden", the information window will close and the update process continues.

After a short time, another program window appears with the functions for controlling the update process.

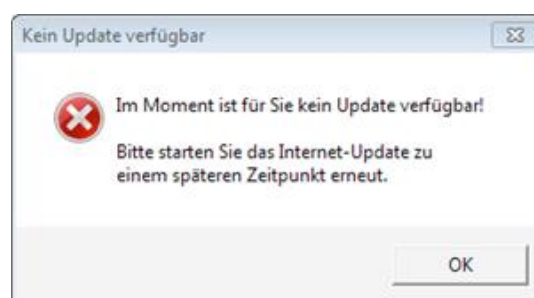


"Info" calls up the information about the update process again.

"Start" accesses the update server and checks whether updates are available for the current customer in the current maintenance contract situation.

Depending on the result, the following options arise:

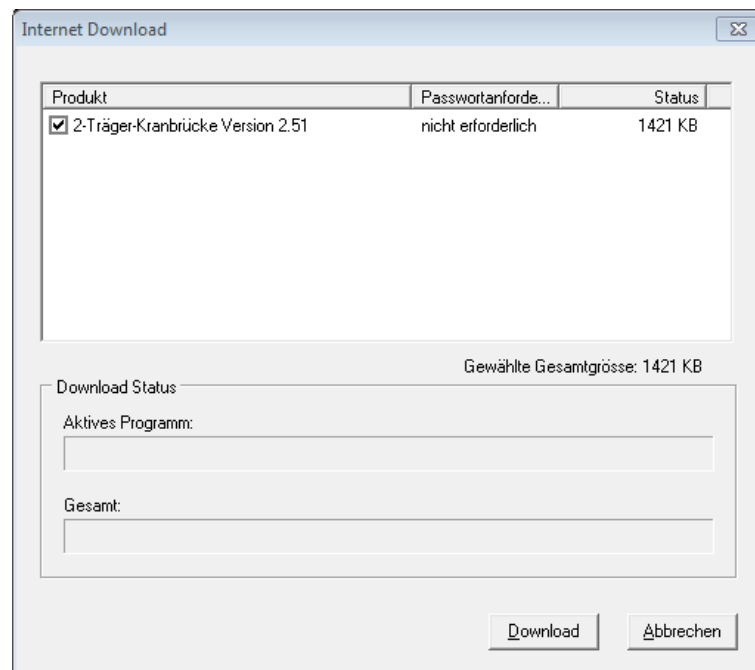
### No Update available



If there are no updates, you will be informed accordingly.

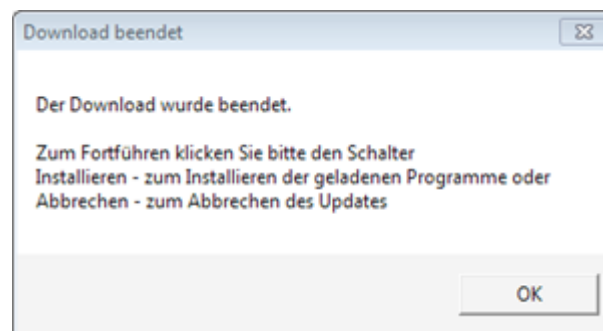
### Update available

If an update is available, it will be displayed with the program name, version number and a note that a password renewal may be required.

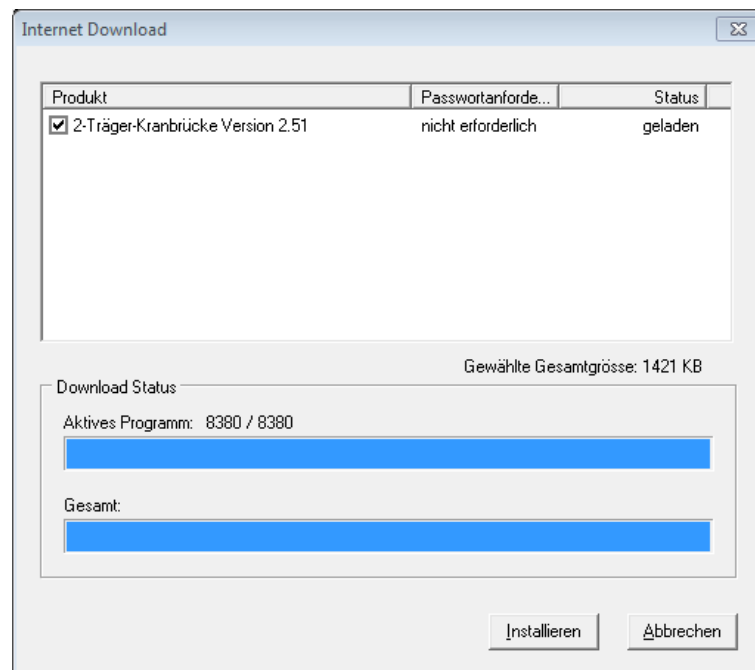


The update process is started with "[Download](#)". The progress of the downloading process is displayed graphically with the progress bars in the "[Download Status](#)" area.

After a successful download, a small window appears with instructions on how to proceed.

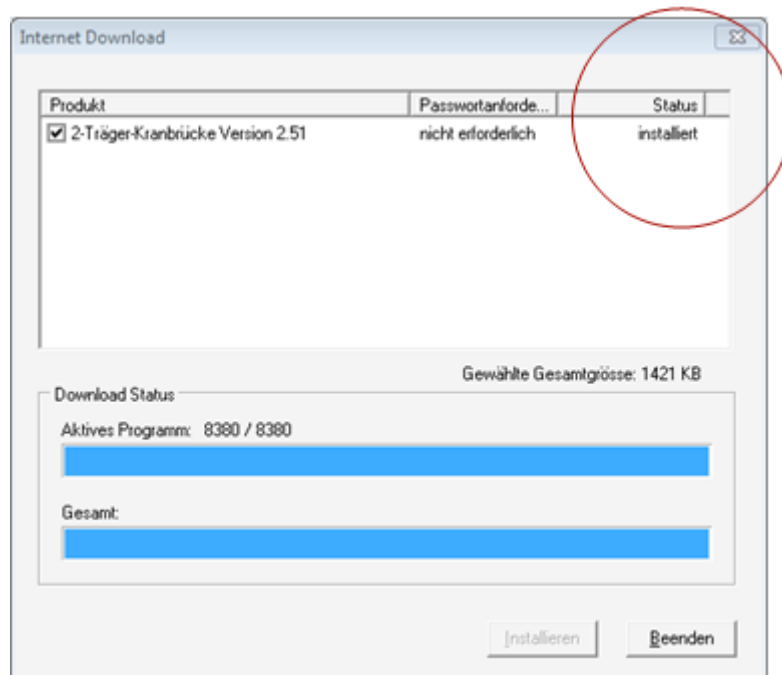


After confirming with "[OK](#)", this information window is removed and the window with the loading bar is activated again.



The update process can now be terminated for the last time without installing the new version with **"Abbrechen"**.

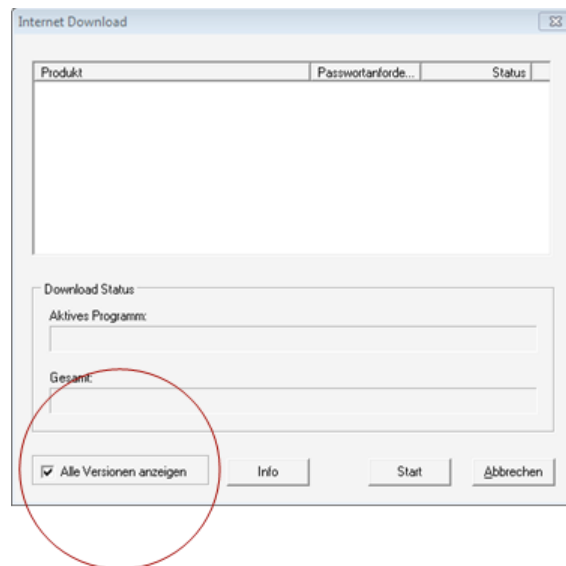
**"Installieren"** starts the installation of the new program version. After installation, the success state is displayed in the program window under **"Status"**.



**"Beenden"** closes the update process, and the new program version can be used.

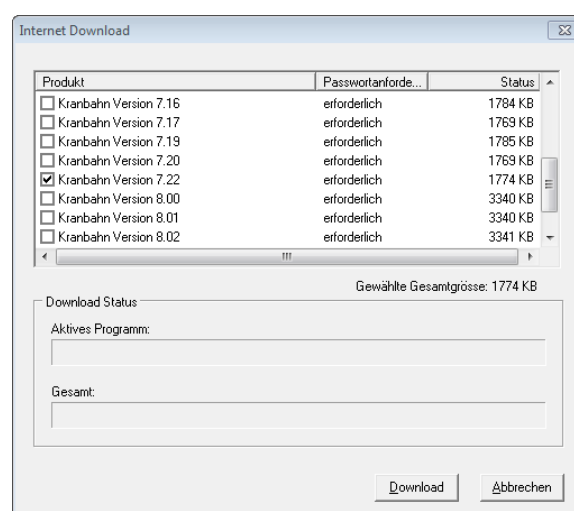
## Downgrade to older versions

The online update function can also be used to downgrade to an older program version.



To do this, select the option "**Alle Versionen anzeigen**" at the beginning of the update process. After starting and connecting to the update server, not only the latest available program version is determined, but all available program versions.

These are displayed in a list. Select the desired program version there and start the update process analogous to the normal update with "**Download**".



**Notice!** Please note that the new program versions may require new passwords. These must be requested as part of the usual password request procedure. Please consider that you will no longer



have a functional program version available until the time the new passwords are installed. To be on the safe side, you should make a backup copy of the STAHL2000 installation folder before the update.

## Support

### Reachability

You can reach our support by phone Monday to Friday from 8:00 a.m. to 4:00 p.m. at:

0271 / 23 167-55

Via **E-Mail** Your support request reaches us at the address:

[support@klietsch.com](mailto:support@klietsch.com)

Our website also offers you information on updates and new products, the option of downloading current and old program versions and requesting passwords for our products:

<http://www.klietsch.com>

### In case of support

Please have the following information ready:

- Company name
- Operating system version
- CD Code

We have the option of connecting to your computer via remote maintenance. We use the product "pcvisit Easy Support" for this purpose. To establish a connection, you must start guest software on your computer. You can download these from our website.

